

# Metal Fabrication



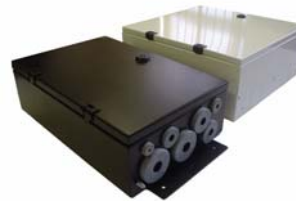
ETSI racks for copper / fibre telecom applications in 300 x 600 configuration or 600 x 600 with optional side pods for cable management.



Road side cabinets for the telecommunications industry. The item show is a shroud designed to cover and existing damaged or corroded cabinet to reduce engineers reinsta- lation time from days to minutes.



Data / server racks in all the standard configurations and if required on a regular basis non standard items can be manu- factured to your require- ments



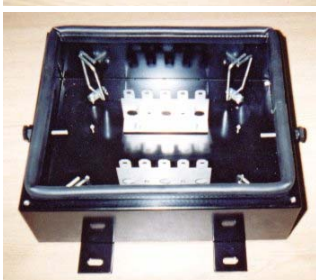
Disconnection box hinged and lockable to the same high spec as the previ- ously mentioned unit with a different gland style and layout.



Kits for the installation can also be supplied from wiring looms to cable management for kitting service also see data sheet 8



Power Distribution Units 3 pin 13 amp, IEC 320, Fused and neon's all supplied fully tested with ce marking.



A high spec connection box manufactured from 18swg mild steel finished in low smoke zero halogen powder coat, grommets and door seal. Is rated to IP66 and is available in 5 way, 10 way and 25 way



108 style distribution frame again for telecommunica- tion application can take up to 700 connections and is supplied fully assembled and can be fitted by one engineer.

# Plant list at our disposal



## Guillotine

**Promecam GTH-425** with numerical control. Capacity 2500 x 4mm mild steel or 6mm Aluminium or 2mm Stainless steel  
**Safan VS310-6**. Capacity 3000 x 6.5mm Mild steel

## Laser

**LVD Axel 3015** 2KW. Capacity 3000 x 1500mm up to 15mm mild steel

## Punch Laser Combo

**Trumpf 600I** 1.5KW variable up to 108 tools, 18 stations all rotational max sheet size 2500 x 1250

## Punches

**Trumpf Trumatic 500 FMC** variable up to 108 tools, 18 stations, all tools rotational, max sheet size 2500 x 1250 without progressive move. Fully equipped auto sheet load/unload and part picking.

**Trumpf TC-200** Variable up to 96 tools, 16 stations, all tools rotational, complete with CNC tapping facility.

**LVD Delta 1250RS** 20 Stations 2 auto index max 6.4mm mild steel 2500 x 1250 without reposition.

**Wiedemann Centrum 2000** 22 station turret 2 auto index.

**Amada Arcade 210** 19 station turret 3 of which are auto index.

**Strippit 30/30/60 Fabricator** - Copy Punch Capacity 85mm dia hole in 2mm mild steel, 25mm dia hole in 5mm mild steel.

**Geka Microcrop Steel Worker** 36Tonne punch capacity 27mm dia hole in 10mm mild steel.

**Pierce-all 2025**

## Forming

**Salvagnini P4-2512** CNC fully automatic multibend metal forming unit Capacity 2500 x 1250.

**Trumpf Trumabend V103** 3 metre, 130 tonne, 10 axis, down stroking press brake.

**Amada Promecam HBF80.25** 2.5 metre, 80 tonne, 8 axis, down stroking press brake.

**Amada Promecam APX100.3** 3 metre, 100 tonne, 7 axis press brake.

**Amada Promecam APX80.25** 2.5 metre, 80 tonne, 7 axis brake press (2-off).

**Promecam RG65-25** 2.5 metre, 65 tonne 7 axis brake press.

**Promecam RG-35-20** With Hurco twin axis microprocessor gauging, 2 metre.

**Promecam RG-25-12** With Hurco twin axis microprocessor gauging 1.25 metre.

**Mebusa** CNC Press brake 3 metre, 90 tonne .

**Mebusa** CNC Press brake 1.25 metre, 30 tonne .

**SIMAS** v Horizontal bending press ( Model super series S.200) 30 tonne.

## Milling Tapping and drilling

**Haas** CNC vertical machining centre with 16 station auto tool change for high precision milling, drilling and tapping (and engraving).

**Meddings Ibarmia A40**.

Tapmatic up to M12.

Multihead drilling bed (TAL) Series 1 (7 station).

## Sawing

**Comete275** Semi-automatic saw up to 120mm dia in mild steel.

**Super brown** cut off saw up to 90mm dia.

## Tube Bending

**Transfluid DB642** N.C Tube bender up to 120mm dia x 3mm wall

## Notching

**Comaca** Capacity 250 x 4mm

**SMW 6S** power notcher capacity 150 x 3mm

## Fastener Insertion

**Sertabush 500** 10 tonne (3-off)

**Pemsertter series 1000**

**Haeger HP6CE** with auto feed

## Welding

Spot welders up to 25 KVA (4-off)

Spot welders up to 52 KVA (1-off)

Capacitor discharge stud welders (3-off)

Mig welding

Tig welding

Arc welding

Oxy-Acetylene welding

## Hand operated

Plasma cutter

7 fly presses (extensive tooling)

2m hand rolls

## Deburring

**Ellesco** Grinding master for straight grained effect on aluminium and stainless steel, as well as for highly efficient de-burring

Tumble deburring

## Finishing

All finishing is done either in house at place of fabrication or by previously approved sub-contactors for Powder coating, Stove enamelling, Zinc plating, Metal spraying, Electro polishing, Galvanising, Anodising and chrome plating.

## Systems Used

Camtec PEPS 3.1, Radan, Trumpf ToPs300, Redthorn, AutoCAD 2002, Sage.