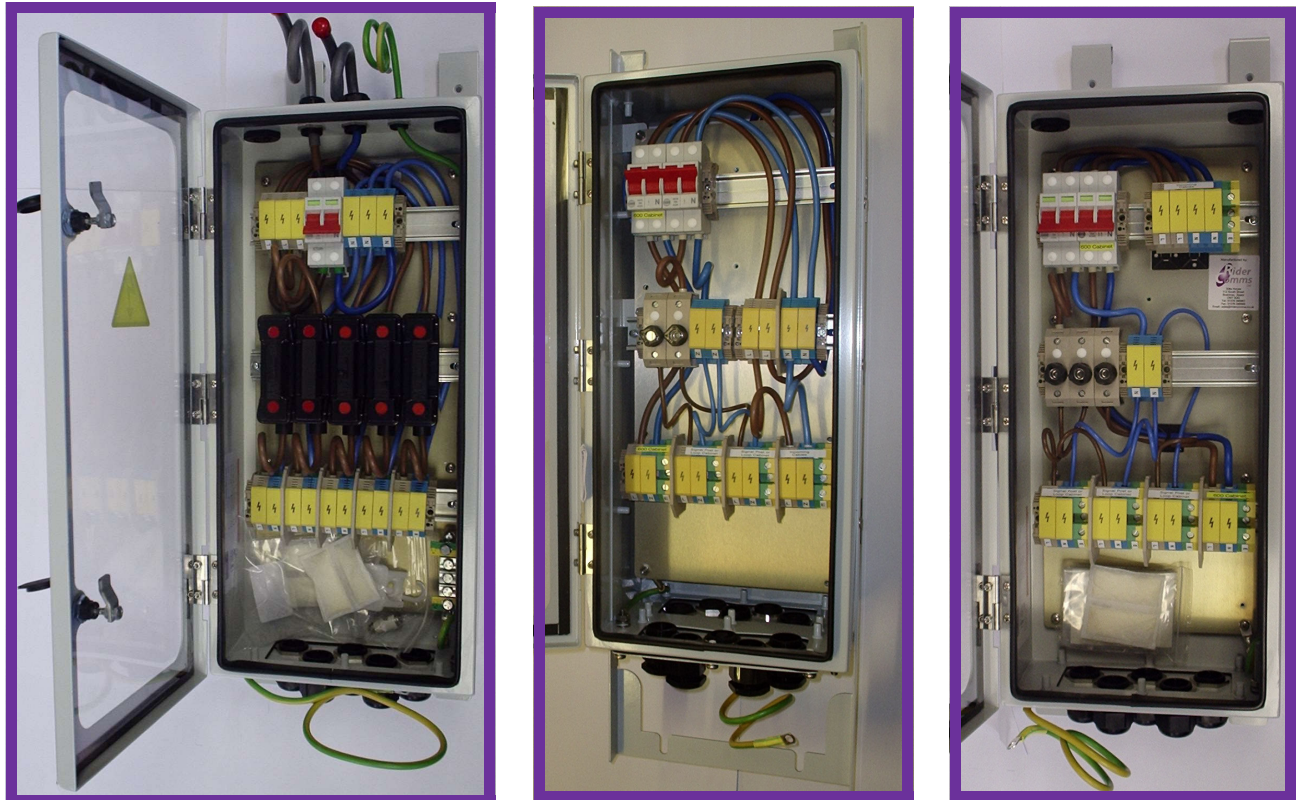


## Power Distribution Enclosure



### Description

Rider Comms Ltd has designed a new range of modular enclosures to satisfy Above Ground Power, Copper and Optical Fibre Cable Jointing applications.

The family of Power enclosures is intended for the fusing, jointing and termination of power cables. All the enclosures variants can be fully customised to suit specific site locations.

All the enclosures are built to a high standard complying to IEE regulations BS7671 2008 17th Edition. The electrical equipment and components meet the IP2X standard.

The range of Power Distribution Enclosures address all applications covered by the MCX0164, MCX0165 and MCX0170 series.

Our enclosures can be installed fully assembled into the Highways 609 cabinet which aids a faster installation and better utilisation of the electricians time in terminating outgoing supplies. All the enclosures are supplied serial numbered, factory tested and certified.

Rider Comms Limited, Silks House, 112 South Street, Braintree, Essex. CM7 3QQ

Tel: 01376 345667 Fax: 01376 345669

Email: [sales@ridercomms.co.uk](mailto:sales@ridercomms.co.uk) Web: [www.ridercomms.co.uk](http://www.ridercomms.co.uk)



Cert No. 023100

## **Benefits & Features**

- The enclosure houses all the equipment and is delivered pre-assembled, cabled and fits directly into the 609 roadside furniture without any modification to the unit.
- Each unit is individually serialised with it's own test certificate along with a Certificate of Conformity.
- The enclosure can be site location specific, for example clearly marked and glanded for designated marker post locations.
- Quick, simple and very cost effective Installation solution.
- The unit requires no special tooling and can be installed with a single operative.
- On request units are fitted with RCD and Lockable fireman switch for power isolation at any point. Also unit will be wired to suit relevant current rating and can be fitted with RCBO's instead of an RCD & Fuses for additional safety.
- The need for external loops between each side has been removed.
- Access is gained into the unit via two cam compression locks for quick and easy access and the door has lift off hinges for complete removal for accessibility.
- The double unit has allowance for a shielded box to be fitted so rural signal interface can be installed inside of the unit thus doing away with a separate dome enclosure.
- All electrical equipment housed within the enclosure complies to the IP2X standard.
- New W series connectors come labelled and colour coded and are vibration resistant.
- The enclosures are wired using tri-rated cables.
- All internal wiring is terminated using boot lace ferrules.

## **Cable Glands / Blanking Plugs**

The Single Compartment unit is supplied with 5 No.CW Glands for armoured cable entry. The Double Compartment unit is supplied with 2 No.CW Glands for armoured cable entry and 5 No.for cable output. These are CW25 Glands which are suitable for use with external armoured cable and provides a cable range of 22.5mm to 27.5mm if less than 5 No. outputs are required the unit will be supplied with blanks. **In the case that non armoured cabling is to be used 5 No nylon standard cable glands rated to IP66 are fitted to the gland plate accommodating up to 3 core 35mm<sup>2</sup> cable.**

## **Gland Specification:**

- Brass CW or E1W Armoured cable gland with earthing and shroud
- Ingress Protection Rating IP66 Nylon cable gland for non armoured cables.
- RoHS Directive 2002/95/EC Compliant
- Operating Temperature – 40 °C to +100 °C

## **Compression Latches**

Solid Cast quarter turn quick release slotted head locking system compression latch. Covers provide added protection against dust.



## **Hinges**

The hinges are made from polished passivated 316 stainless steel. Once the door is clear of the gasket (approx 30 degrees) it can be completely removed for full unhindered access to the equipment enclosed. Each hinge pin is 1mm different in length the top pin being the longest for location followed by the middle, then bottom for easy replacement.



## **Enclosure Specification:**

- Enclosure Manufactured from Aluminium grade NS4
- Finished in Alcom 1200 and painted RAL7035 plating stops galvanic process to DEF STAN 00-970.
- Independently tested to Ingress Protection rating IP66 (Certification available on request)
- All fittings and screws stainless steel grade 302
- All manufacturing processes and materials comply with Highways Agency specification TR1100 issue D October 2005.
- Weight of Single Closure Equipped 5.00-10.00 kgs Double Closure Equipped 8.00-15.00 kgs
- Double Compartment 259 w x 280 d x 783 h, Single compartment unit 259 w x 200 d x 783 h

Rider Comms Limited, Silks House, 112 South Street, Braintree, Essex. CM7 3QQ

Tel: 01376 345667 Fax: 01376 345669

Email: sales@ridercomms.co.uk Web: www.ridercomms.co.uk



Cert No. 023100

## **Installation**

The units are all 10mm smaller than the 609 cabinet aperture and therefore drop straight into the cabinet. Below you can see the hooks on the unit and it being lowered into the 609 cabinet (Fig. 1). All units have formed hooks to the top of the unit ( Fig. 2) which hook over the back board prior to screwing in place this is so the unit can easily be installed by a single operator without trying to manually hold the unit in place to screw to the back board (Fig. 3). The unit is now ready to be cabled up to the feed.



Fig. 1



Fig. 2



Fig. 3

## **Ordering Information**

Part Number	Description
RCL 90/1158	(MCX0165) Pre Wired Distribution Box. See bill of materials supplied under separate cover. For Non armoured cables
RCL 90/1160	(MCX0165) Pre Wired Distribution Box. See bill of materials supplied under separate cover. For armoured cables
RCL 90/1186	(MCX0164) Pre Wired single compartment Distribution Box for non armoured cables using 5 nylon standard glands. 5 independent live and Neutral outputs 100A 2 pole switch and 5 red spot fuses. Accommodating up to 35mm <sup>2</sup> cable.
RCL90/1169	(MCX0164) Pre Wired single compartment Distribution Box for armoured cables using 5 CW glands. 5 independent live and Neutral outputs 100A 2 pole switch and 5 red spot fuses. Accommodating up to 25mm <sup>2</sup> cable.
RCL90/1170	(MCX0170 Sheet 4) Standard Situation. Through door fireman's switch preventing access to live components.
RCL90/1171	(MCX0170 Sheet 5) Cantilever Power Cabinet. Through door fireman's switch preventing access to live components.
RCL90/1172	(MCX0170 Sheet 6) Gantry Auxiliary Supply. Through door fireman's switch preventing access to live components.
RCL90/1173	(MCX0170 Sheet 7) Double Gantry Direct. Through door fireman's switch preventing access to live components.
RCL90/1174	(MCX0170 Sheet 8) Double Gantry Indirect. Through door fireman's switch preventing access to live components.
RCL90/1188	Optional Additional Earth bus bar to aid the easy install of large diameter cables. Through door fireman's switch preventing access to live components.

### **Please Note:**

Customised Build specifications can be achieved in accordance with project scheme requirements.

Fully customised gland plate can be ordered by simply placing CGP after the part number and by stating number of cables types diameters on the order.

Rider Comms Limited, Silks House, 112 South Street, Braintree, Essex. CM7 3QQ

Tel: 01376 345667 Fax: 01376 345669

Email: sales@ridercomms.co.uk Web: www.ridercomms.co.uk



Cert No. 023100